

YMCA DERBYSHIRE

YMCA

Here for young people
Here for communities
Here for you

Impact Report 2021/22



YMCA KEY COLLEGE

Accredited vocational training courses for
young people



YMCA Y-KIDZ

Affordable quality childcare provision





Significant activities

The work of the YMCA Derbyshire is **diverse** and includes **housing** in supported premises, **support outreach work** for people with a variety of support needs, the provision of youth and children's **training and education** through youth orientated campuses.

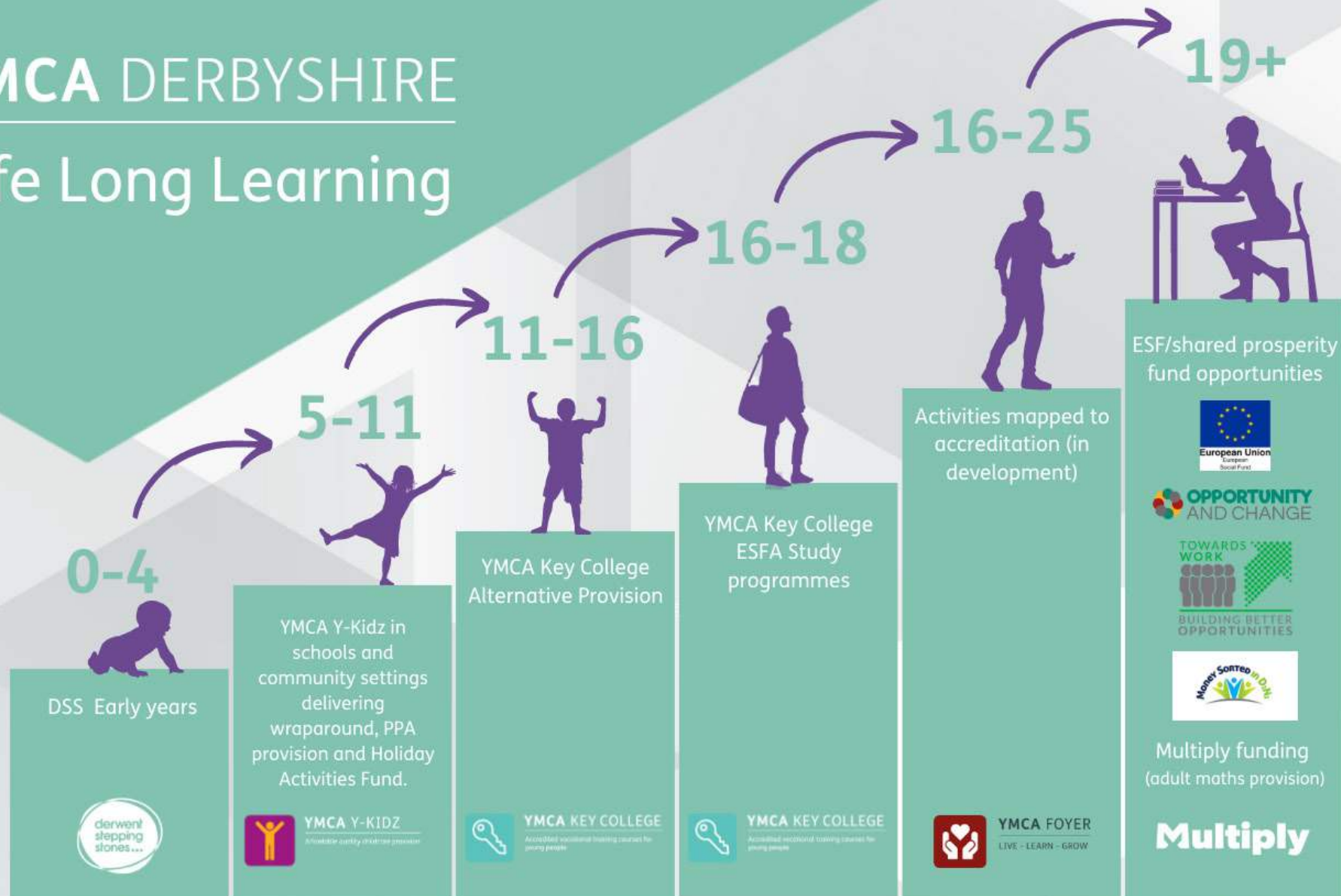
Lifelong Learning

In June 2021 the role of the **Director of Lifelong Learning** was introduced into the leadership team at YMCA Derbyshire. This role is focussed on driving forward the development of Lifelong Learning hubs within the communities we serve to ensure that we are offering formal and informal learning opportunities to support the development of their health, well-being, and social mobility.



YMCA DERBYSHIRE

Life Long Learning



Family work to support all education phases and link with family hub developments

Youth and community enrichment to support life skills at every phase

Aspiration to provide mentoring at every transition point



Early years

From October 2022, Derwent Stepping Stones became a wholly owned subsidiary of YMCA Derbyshire. The Lifelong Learning team at YMCA Derbyshire had been seeking to broaden our portfolio to include nursery provision to make our offer truly Lifelong starting at 0-4 years.

When the opportunity came up to partner both organisations saw this as the right fit.

Together we will ensure families in local communities can gain access to sustainable, high-quality, flexible, and affordable childcare initially from the current Derwent Stepping Stones sites on St Marks Road in the Derwent ward and St James Centre in the Normanton ward. In the future, our aim is to expand into new areas across Derby and Derbyshire as opportunities arise.

YMCA Y-Kidz

Under the banner of YMCA Y-Kidz, YMCA Derbyshire works with primary schools across the county to deliver high quality teaching support, lunchtime cover, breakfast and after-school clubs (wraparound care) as well as holiday activity clubs and sports clubs primarily for children aged between 4-11.



YMCA Y-Kidz

During the year the YMCA Y-Kidz team continued to work at **three primary school sites**; two in Derby and one at Weston on Trent, supporting schools to meet their PE and sports needs, providing busy families with **safe and supportive childcare** with our before and after school clubs and enabling hundreds of children to access fun and exciting holiday clubs. The new provision at Weston-on-Trent has been sustained and provision at St John Fisher Primary has been launched for 2022/23.



Holiday Activity and Food provision

We worked in **3** locations to deliver HAF during 2021/22 to provide **4** hours a day of activities promoting health and wellbeing, resilience, and teamwork. Each child was provided with a hot meal each day to combat holiday hunger.

We sign posted parents to services within their localities to support them in a variety of ways. By securing additional funding we were also able to supply **40** families with food boxes for 2 weeks during in the summer holiday period to cover the weeks where they weren't accessing the HAF activity provision. These had easy to follow recipe cards with them to encourage the families to cook along together.

For the Christmas HAF project we switched to online support sessions due to COVID. These included cook along, quiz and online fitness sessions alongside a food box being delivered to the families and a craft pack.





Youth and communities

We provide a range of services and activities to support the health and wellbeing of residents, students, and staff. These include retreat days and a chaplaincy service alongside a range of activities on our allotments. We continue to provide a psychotherapy service which is available to all residents, students, and staff.





YMCA Key College

YMCA Key College as part of YMCA Derbyshire provides education for 16-19 year olds plus those aged 19-24 with an EHCP through the **Education and Skills Funding Agency** funded (ESFA) Study Programmes, split across campuses in Derby and Ilkeston. Our curriculum offer includes **Childcare, Social Care, Retail, Building Trades, Hospitality, Digital Skills** and **Business Administration**, with all Study Programmes containing maths and English to support the vocational learning.

In addition to the study programmes, other courses are delivered across a range of qualifications on behalf of local schools in Derby and Ilkeston with **Hospitality** and **Digital Skills** proving particularly popular.

Transition mentoring

We have supported **18** young people during 2021/22 period who have been making the transition into post **16** education through 1-to-1 mentoring sessions. Sessions commenced whilst they were still in school to assist in them identifying the right post **16** destination for them, supporting on exam results day to assist with any changes to plans, followed by ongoing support to ensure the post **16** placements was sustained.

83%

are in sustainable placements

17%

are working with support agencies to secure next steps





In school resilience workshops

We worked with **2** schools during 2021/22 with a total of **15** pupils in pupil referral provision to deliver group-based resilience sessions.



YMCA Key College

74%

Students starting on our programmes completed the core aim of the ESFA study programme.

60%

Learners coming from the 30% most deprived areas in England.

44%

Students identify as having special education needs or disabilities (“SEND”).

16%

Students were on the autism spectrum (a prevalence eight times higher than the general population)

2%

Students had mental health difficulties (general population)

Both Level 2 Care Study Programme and Level 1 Digital Skills Study Programme have proven sustainable. The Digital Skills Programme being further developed to include a qualification in Business Administration.

A new Entry Level Study Programme entitled **‘Introduction to Building Trades’** has been launched for 2022/23 and is recruiting strongly. It seems to be meeting an unmet need for SEN-accessible provision in that sector at that level.

A little under half of our students live in Uni Connect outreach wards; these are wards with lower than expected higher education participation. YMCA Key College continues its partnership project with the University of Derby, which is opening up possibilities students hadn’t considered before. There have been multiple students who have applied to the university this year; a stark contrast to two years ago when no YMCA Key College student had ever gone directly to university.

Progression for our students this year has typically been into education or employment:

- 32** continuing with further education
- 26** starting employment
- 8** remaining on programme into 2021/22
- 1** starting university and another being supported with their application.





100% feel safe at YMCA Key College



100% felt that staff value students' feedback



100% felt that they had regular reviews



96% felt that YMCA Key College creates a caring community



100% felt the support they have been given had been useful



100% felt that health and safety was explained to them



100% felt that learning aims and objectives were made clear to them



100% felt that they received feedback from their tutors



100% felt that staff were friendly and approachable

All subject areas were separately audited by City and Guilds or NCFE and we maintained direct claim status (where applicable) in all cases as recognition of the continued quality of the provision we offer. Matrix re-accreditation was achieved recognising the quality of the information, advice and guidance given.

YMCA YMCA Key College undertook a wellbeing project with Derbyshire Wildlife Trust which improved student wellbeing after the lockdown. Students also participated in visits to a local forest school.



Further Support

Funded through the European Social Fund and the National Lottery Community Fund, BBO offers residents of YMCA Derbyshire and individuals from the local community support via three pathways:

Money Sorted

Helps participants experiencing debt and financial hardship to improve their financial capability skills.

Opportunity and Change

For individuals experiencing two or more complex needs. With specialist intervention, signposting, and 1-2-1 support, to help overcome past experiences move towards training and employment.

Skills Plus for Change

Delivering skills coaching to individuals and groups to help with paying bills and sustaining a tenancy.

Quality standards

We were successful in the 2020/21 audit of the ISO9001:2015 standards. We were also successful in an inspection for the Matrix Quality Standard and the renewal of our CredAbility Award. We have also achieved Cyber Essentials re-accreditation on the cyber security of our IT systems.



Achievements

A full list of the Charity's objectives and achievements can be found in the Annual Report. This can be found at www.ymcaderbyshire.org.uk or by writing to the Charity's registered office.

